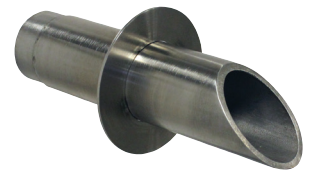


Vianti Falls

by EasyPro Pond Products



Stainless Steel Wall Scuppers

Product Overview & Specifications

Product Introduction

Thank you for purchasing EasyPro's Vianti Falls scupper. This stainless steel spillway is ideal for formal water features. This scupper can accentuate the complete water feature in an endless number of possible applications.

Care

Residual metal particles during the manufacturing process may cling to the surface of the scupper and rust during use. This mild surface rust is not inherent to the stainless steel scupper unit and can be easily wiped off with a damp rag.

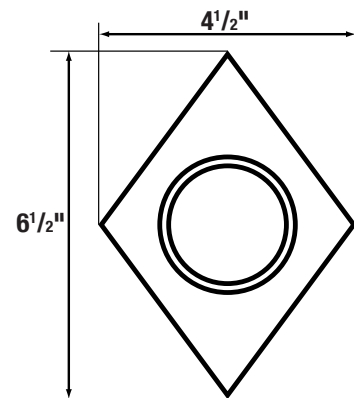
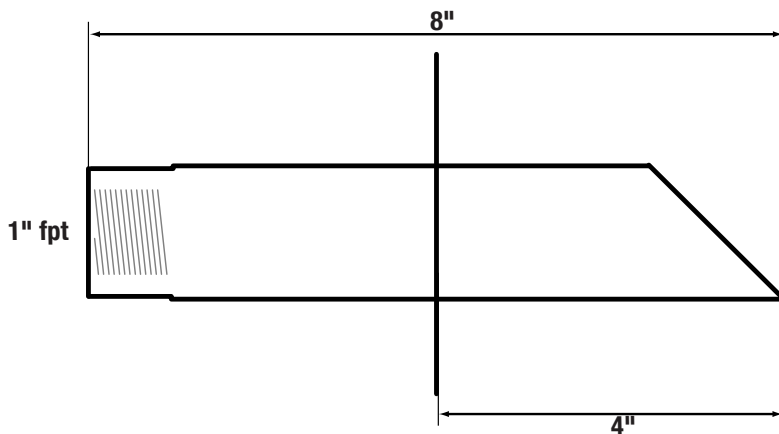
Product Specifications

- 1" fpt inlet
- 5-10 gpm recommended flow rate
- Constructed with 304 Stainless Steel

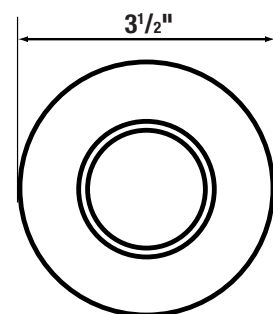
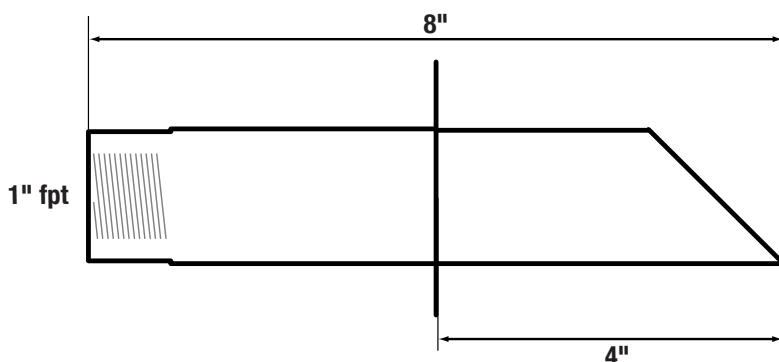
Scupper Dimensions

NOTE: Drawings are not to scale.

SWS2D — 2" round wall scupper w/ diamond trim plate

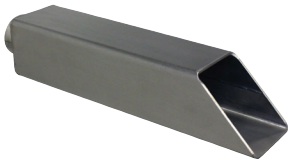


SWS2R — 2" round wall scupper w/ round trim plate



Vianti Falls

by EasyPro Pond Products



Stainless Steel Wall Scuppers

Product Overview & Specifications

Product Introduction

Thank you for purchasing EasyPro's Vianti Falls scupper. This stainless steel spillway is ideal for formal water features. This scupper can accentuate the complete water feature in an endless number of possible applications.

Care

Residual metal particles during the manufacturing process may cling to the surface of the scupper and rust during use. This mild surface rust is not inherent to the stainless steel scupper unit and can be easily wiped off with a damp rag.

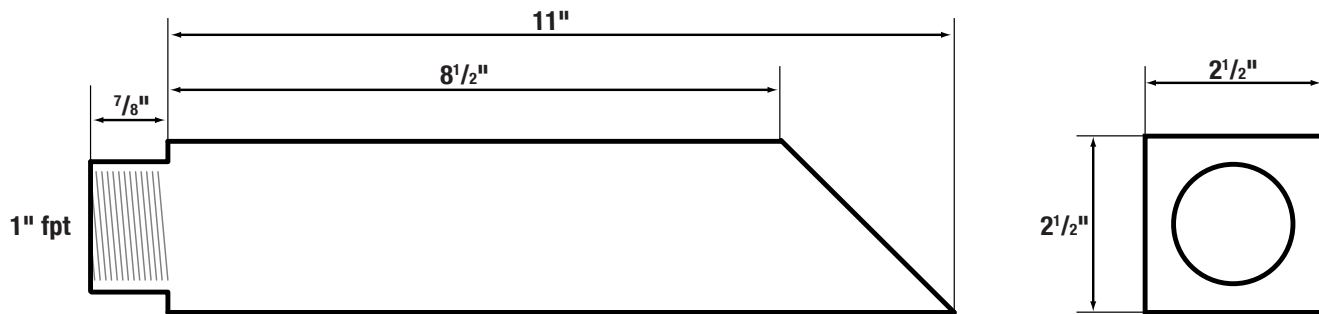
Product Specifications

- 1" fpt inlet
- 5-10 gpm recommended flow rate
- Constructed with 304 Stainless Steel

Scupper Dimensions

NOTE: Drawings are not to scale.

SWS2S — 2½" square wall scupper



SWS3R — rectangle channel wall scupper

